

2005 Award Winner

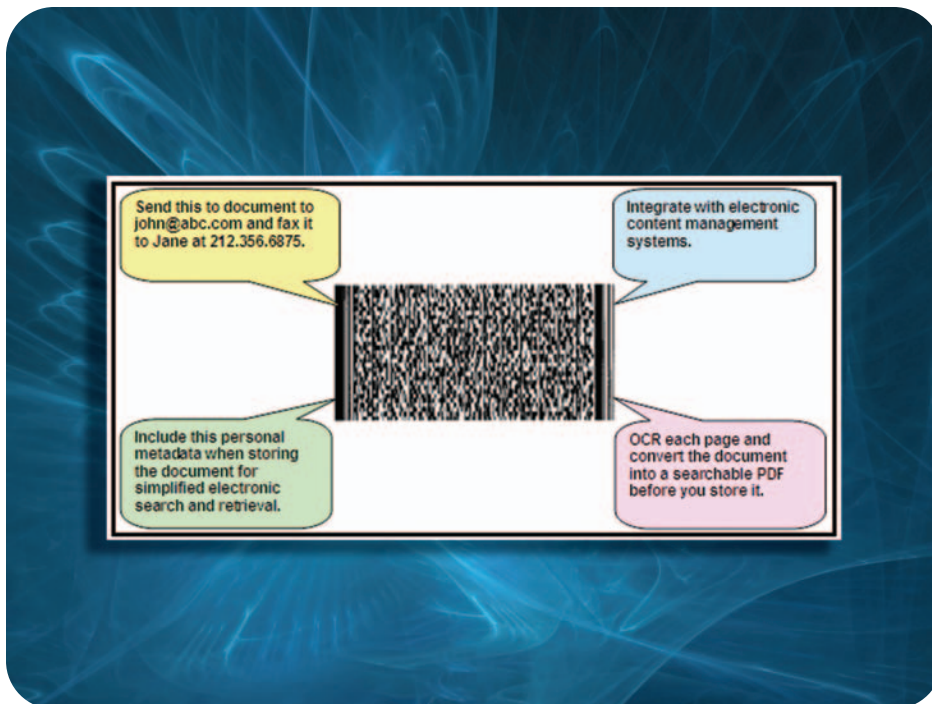


10th Annual Awards

Best Production Scanning Archive Solution

DocuLex

Goby Capture



A 21st Century document imaging strategy relies on a marriage between hardware and software products. BERTL's Best Awards highlight software solutions that excel in areas including fleet management, cost control, network security, document workflow, archiving, and distribution — issues that are critical

points of decision-making in every company.

BERTL has named DocuLex's Goby Capture "BERTL'S Best" in 2005, in the category of Best Production Scanning Archive Solution.

While much of the hype surrounding document scanning in the general office is focused on the new alliances

between MFP manufacturers and software vendors, with users able to integrate metadata or keywords from the device touch screen, there is another option available to users looking for an efficient method of converting hard copy into soft copy.

While the ability to enter metadata or keywords from the MFP touchscreen may be convenient for one-off jobs, it can be a time-consuming process, taking knowledge workers, and those supporting knowledge workers away from the desktop, the place where users are most productive.

DocuLex's Goby Capture addresses this issue, allowing users to create a workflow process that provides the same degree of personalization, filtering, and keyword incorporation but reduces the user's need to leave their desk to a single visit — and literally seconds at a scanner.

DocuLex's Goby Capture does this by allowing the user to produce a cover sheet for each document that needs to be converted into electronic output using its Goby Profiler utility. The user enters each piece of information relating to the document into a template at their desktop. The application produces a cover sheet complete with a two-dimensional bar code which contains all the

2005 Award Winner

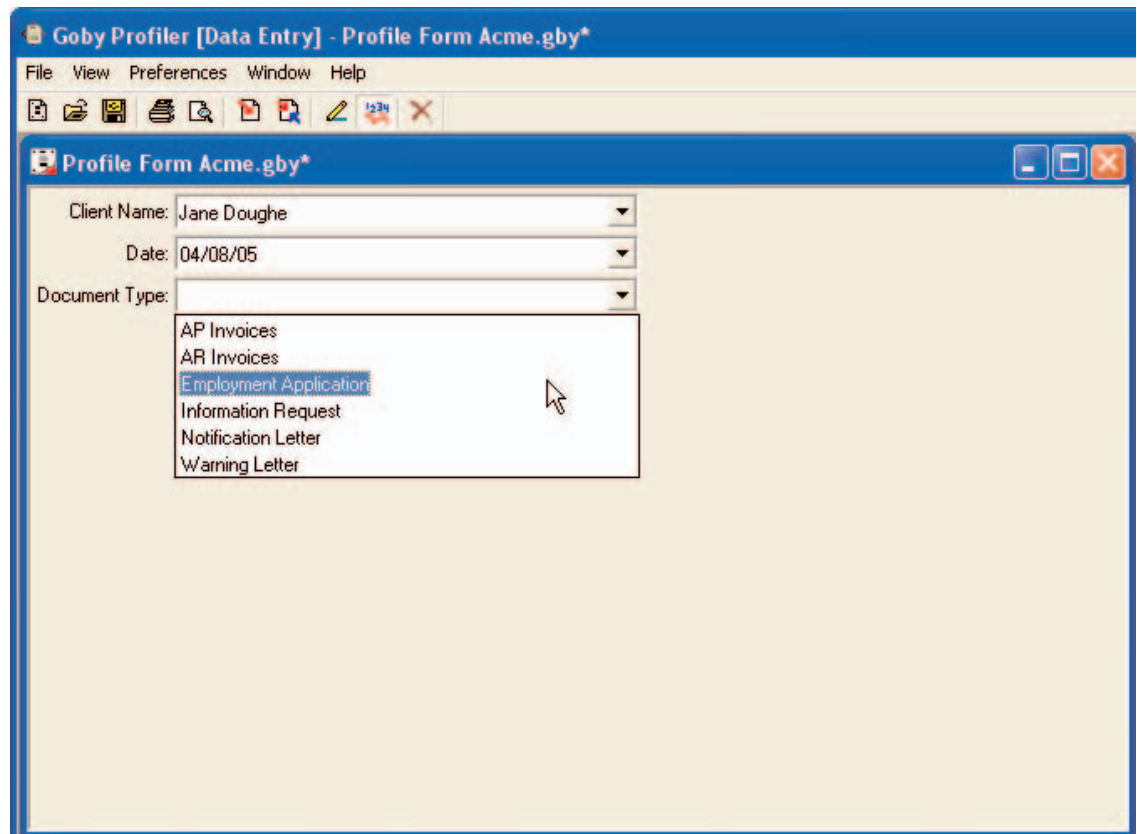


10th Annual Awards

metadata. The user simply places the document into the outbound stack with the cover sheet on top and continues with the next document.

The information template can be customized on a scan function-by-scan function using the Goby Profiler. For example, a paralegal might need different metadata to store discovery court documents in preparation for a case than they would for organizing a real estate purchase. Using Goby Profiler, the paralegal chooses the data fields that he or she wants to incorporate into the standard scanning workflow process. They can include drop down lists, yes/no criteria, data validation, and much more.

By the end of the day, the user now has a stack of documents in the outbound tray all divided up with cover sheets. The user now makes a single visit to a scanner and scans the entire stack to a single hot folder where the next element of the Goby Capture utility takes over. The hot folder is polled by the Goby Monitor utility. When the Goby Monitor detects new files in the hot folder it automatically searches for the cover sheet job differentiators. This not only tells the Goby Monitor where the first and last pages are in the document but also what to do with the file.



The Goby Profiler utility in action

Documents are converted into a searchable PDF format on the fly, the industry standard file format for most electronic filing. Once converted into this file format, the files can be routed to third party content managers for automatic filing and archiving using the metadata built into the cover sheet bar code.

When dealing with document-intensive environments like legal and financial offices one of the key workflow issues that must be addressed is keeping time spent away from the desktop to the bare minimum. At no

location is the paralegal or administrative secretary more productive than when using their desktop keyboard. Take them away from the safety zone and place them in-front of a touch screen with an unfamiliar interface and productivity is going to drop.

In a world where a staff productivity drop is measured in hundreds of dollars per hour in lost billing opportunities, the logic behind keeping key personnel at their desk running at maximum efficiency becomes a balance sheet no-brainer.

2005 Award Winner



10th Annual Awards

Spotlight on DocuLex

Established in 1996, DocuLex (Winter Haven, Florida) was created to supply the litigation-support imaging industry with production software, setting the standard for high-speed scanning, pagination, printing, OCR, and coding.

The first to introduce automated coding sheet design and recognition, DocuLex has delivered innovative products and updates to maximize production imaging.

In 2000, DocuLex enhanced the product line to accommodate the desires of archive and workflow

imaging application for more than 13 commercial industries.

With the acquisition of Advocate Solutions in February of 2003, DocuLex added the capabilities of electronic file and data capture for electronic discovery. Together the combined product offering delivers a studio of products that enable the user to capture and index all types of paper and electronic files.

DocuLex offers a complete solution for users requiring paper or electronic file capture and indexing, browser-based search and retrieval software,

services for custom requests, plus product support and onsite training.

DocuLex creates open-system, component document management software for use with production scanners and digital multifunctional copying, printing, and scanning products. Through resellers internationally, the company provides productive, in-house electronic document management for any business environment. The DocuLex product line is easy for new users to understand, yet very flexible for demanding customers.

BERTL's Best

Recognizing the Best in Digital Imaging Technology and Innovation

For the 10th consecutive year, BERTL, Inc. presents BERTL's Best: the best devices and software in the digital imaging marketplace.

BERTL's Best award winners are selected after rigorous analysis of the hundreds of digital imaging devices, software, and management utilities in the world-wide marketplace.

BERTL's analysts review current product lines and new product introductions to identify the select group of devices and software that stand apart from the others.

BERTL's Best covers the entire digital imaging and document management arena:

- Executive Office MFPs
- General Office Monochrome MFPs
- Back Office Production Devices
- Wide Format Devices
- Digital Duplicators
- General Office Color MFPs
- Back Office Production Color Devices
- Document Scanners
- Software and Utilities

Plus, BERTL's Best recognizes products for cost-efficiency and innovation.

While print or copy speeds are important, it is the feature set, functionality, performance, and overall business process value that are the key considerations in judging which product is "BERTL's Best." The important question: "How well does this product work in a real-world business setting?"

BERTL combines its wide-ranging knowledge of the competitive landscape and contact with buyers about their product and supplier experiences to identify worthy products. BERTL analyzes network management utilities, concurrency and contention, print and copy productivity, image quality, return on investment, competitive advantage, accessibility, design and build quality, standard functions, modularity of design and upgrade path, installation, and more.

BERTL is 100 percent independent. It receives no funding from the industry and all product evaluations and reports are published at BERTL's own expense for its subscribers.

BERTL publishes the world's largest library of business competitive intelligence for the digital imaging market at www.BERTL.com